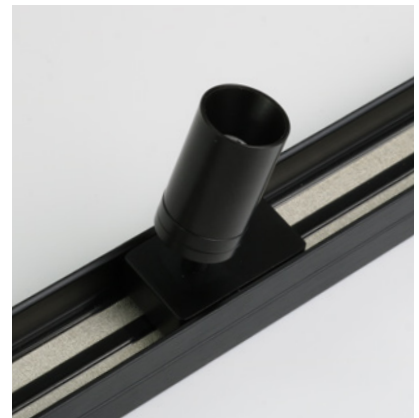


# MAG Spot 1-H

## Fixture Guide

MAGNETO Track System | Indoor | Surface | Output up to 52.65lm/module

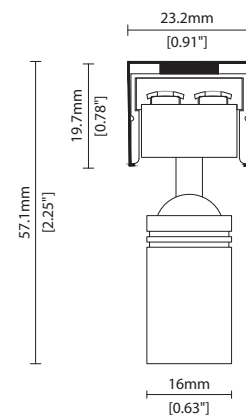


### Key applications

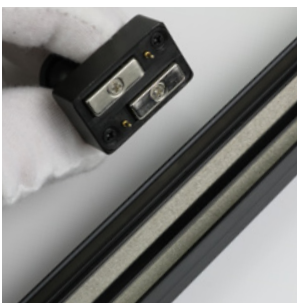
- ✓ Cabinet & furniture
- ✓ Ceiling
- ✓ Direct lighting
- ✓ Display case
- ✓ Interior
- ✓ Retail display
- ✓ Shelving display

### Key features

- ✓ Adjustable
- ✓ Constant Voltage (CV)
- ✓ Diffusion: spoting
- ✓ Glare control options
- ✓ High lumen efficacy
- ✓ IP40 dry area
- ✓ Lens options



### MOUNTING METHOD – MAGNETO Track System



Magnetic track attachment



KKCK-02 MAGNETO Track Clip

# MAG Spot 1-H

## Specification sheet

# KKDÖ



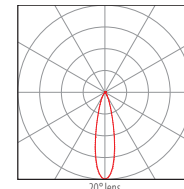
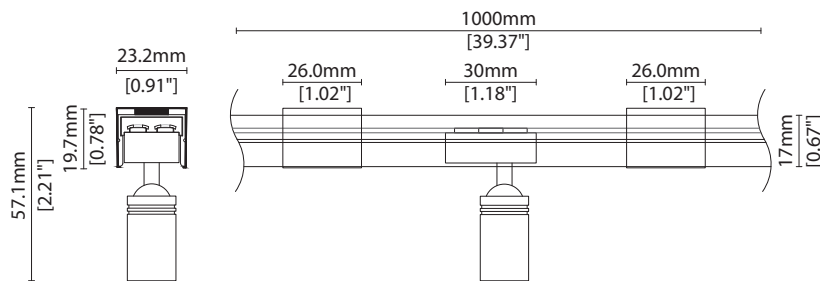
<b>Dimensions</b>	H50.5/Ø16 (H1.99/Ø0.63 in)
<b>Chip</b>	h-line
<b>Cover/Optics</b>	20°/30°/40°
<b>CCT</b>	h-line: 2700K/3000K/3500K/4000K/5000K
<b>LED binning</b>	h-line: 3-step MacAdam ellipse
<b>CRI</b>	≥ 90
<b>Lifetime</b>	50,000 hours @ 25°C (50,000 hours @ 77°F)
<b>Operating temp</b>	T <sub>a</sub> = -20 to 50°C (T <sub>c</sub> max = 60°C) T <sub>a</sub> = -4 to 122°F (T <sub>c</sub> max = 140°F)
<b>IP Rating</b>	IP40
<b>Finish</b>	Black
<b>Mounting</b>	Magnetic Track/Clip Mounted
<b>Power feed</b>	Hardwire tail 1000mm (39.37in)
<b>Control</b>	0-10V/1-10V/DMX/DALI



Power consumption	Supply voltage	Supply current
1.5W	24V DC	0.063A

### Performance Data (3000K)

h-line	R1	R2	R3	R4	R5	R6	R7	R8	R9	R10	R11	R12	R13	R14	R15	CRI	R9	Rf	Rg
h-line	95.9	97.1	99.1	96.9	96.1	94.1	97.0	98	98.6	95.4	94.1	84.8	95.6	98.3	97.0	97.9	97.8	95	101



— C0 / C180      cd / 1000 lm      40° lens  
 ..... C90 / C270

# MAG Spot 1-H

## Code Table



### FIXTURE

Model	Finish	Cover/Lens	Grade	Colour (CCT)	IP	Cable length	Power feed	Optical	Control	Input
MAG Spot 1-H	M1H Black Anodised	BA No cover X	h- h	2700K 27 3000K 30 3500K 35 4000K 40 5000K 50	IP40 40	1000mm 1000 (39.37in)	Single no sheath tail S00X	20° 20 30° 30 40° 40	Switched (ON/OFF) 0	DC 24V g

### Code Example:

M1H	-	BA	-	X	-	h	-	30	-	40	-	1000	-	S00X	-	40	-	0	-	g
MAG Spot 1-H		Black Anodised		No cover		h		3000K		IP40		1000mm (39.37in)		Single no sheath tail		40°		Switched (ON/OFF)		DC 24V

### ACCESSORIES

#### Mounting Accessories

KKTR-02-0500	MAGNETO Track Rail 500mm
KKTR-02-1000	MAGNETO Track Rail 1000mm
KKTR-02-1500	MAGNETO Track Rail 1500mm
KKTR-02-2000	MAGNETO Track Rail 2000mm
KKCK-02	MAGNETO Track Rail Fixed Clip bracket
KKCN-36	MAGNETO Track Rail Power Feed

\* Refer to [Mounting accessories](#) on [Accessories](#) pages

#### PSU/Driver

0-10V/1-10V/DALI/DMX

\* Refer to [Driver/PSU Options](#) page for details or provide requirement and KKDC to offer the suitable option

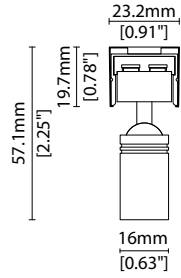
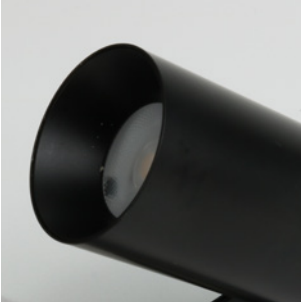
### LED ENGINE VARIANTS (LED STRIP TYPE)

Luminaire	Lumen/module	W	Spec Doc	Dimension
MAG Spot 1	80.4	1.5	MAG Spot 1	H44/Ø16 (H1.73/Ø0.63 in)
<b>MAG Spot 1-H</b>	<b>52.65</b>	<b>1.5</b>	<b>Mag Spot 1-H</b>	<b>H50.5/Ø16 (H1.99/Ø0.63 in)</b>
MAG Spot 3	305	5	MAG Spot 3	H87.5/Ø33 (H3.44/Ø1.3 in)

\* Performance data: h-line, 3000K, 40° lens

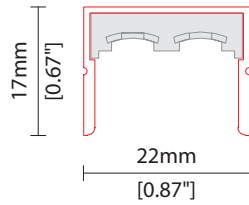
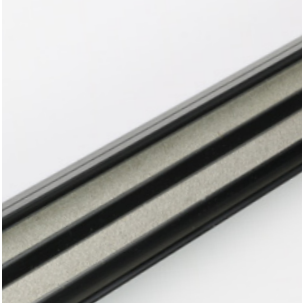
### LENS OPTIONS

\* Options are an integral part of the fixture ordering codes. Please refer to **Code Table** pages.



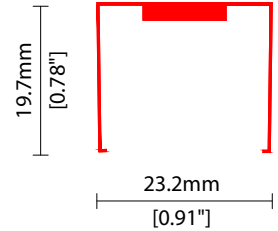
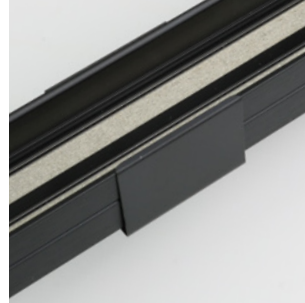
- 20 20° lens
- 30 30° lens
- 40 40° lens

### MOUNTING ACCESSORIES



KKTR-02-0500	500mm (19.66in)
KKTR-02-1000	1000mm (39.37in)
KKTR-02-1500	1500mm (59.06in)
KKTR-02-2000	2000mm (78.74in)

MAGNETO Track Rail  
Black Anodised finish  
W22/H17mm (W0.87/H0.67in)



#### KKCK-02

MAGNETO Track Clip  
Black Anodised finish  
L26/W23.2/H19.7mm  
(L1.02/W0.91/H0.78in)

### POWER FEED



#### KKCN-36

MAGNETO Track power feed  
1000mm (39.37in) tail  
Black finish

### AVAILABLE PSU OPTIONS

Control Mode	PSU (Order Code)	Input Voltage AC	Output Voltage DC	Rated Output Current	Rated Power	Dim %	IP Rating
Switched	CEN-60-24	90-295V	24V	2.5A	60W	-	IP67
	HLG-60H-24	90-305V	24V	2.5A	60W	-	IP67
	HLG-100H-24	90-305V	24V	4.0A	100W	-	IP67
	HLG-150H-24	90-305V	24V	6.3A	150W	-	IP67
	HLG-240H-24	90-305V	24V	10A	240W	-	IP67
0-10V (1-10V)	PWM-40-24	90-305V	24V	1.67A	40W	100-0.15 (100-10)	IP67
	PWM-60-24	90-305V	24V	2.5A	60W	100-0.15 (100-10)	IP67
	PWM-90-24	90-305V	24V	3.67A	90W	100-0.15 (100-10)	IP67
	PWM-120-24	90-305V	24V	5.0A	120W	100-0.15 (100-10)	IP67
DALI	LIN100A1	120-277V	24V	1A per channel	100W	100-0.1	IP66/IP40
DMX RGB	LIN100A1	120-277V	24V	1.33A per channel	100W	100-0.1	IP66/IP40
DMX RGBW	LIN100A1	120-277A	24V	1A per channel	100W	100-0.1	IP66/IP40

### Flicker Free Options - Combination of PSU+ sub-controller

Control Mode	PSU (Order Code)	Sub-controller (Order Code)	Input Voltage AC	Output Voltage DC	Rated Output Current	Rated Power	Dim %	IP Rating PSU/ Sub-controller
0-10V or 1-10V	CEN-60-24	KKDM-06	90-295V	24V	2.5A	60W	100-0.9	IP67/IP20
	HLG-60H-24	KKDM-06	90-295V	24V	2.5A	60W	100-0.9	IP67/IP20
	HLG-100H-24	KKDM-06	90-295V	24V	4.0A	100W	100-0.9	IP67/IP20
	HLG-150H-24	KKDM-06	90-295V	24V	6.3A	150W	100-0.9	IP67/IP20
	HLG-240H-24	KKDM-06	90-295V	24V	10.0A	240W	100-0.9	IP67/IP20
DALI	CEN-60-24	KKDL-02/03/04/visDIM PRO 30	90-295V	24V	2.5A	60W	100-0.1	IP67/IP20
	HLG-60H-24	KKDL-02/03/04/visDIM PRO 30	90-305V	24V	2.5A	60W	100-0.1	IP67/IP20
	HLG-100H-24	KKDL-02/03/04/visDIM PRO 30	90-305V	24V	4.0A	100W	100-0.1	IP67/IP20
	HLG-150H-24	KKDL-02/03/04/visDIM PRO 30	90-305V	24V	6.3A	150W	100-0.1	IP67/IP20
	HLG-240H-24	KKDL-02/03/04/visDIM PRO 30	90-305V	24V	10.0A	240W	100-0.1	IP67/IP20
DMX RGB	CEN-60-24	KKSC-05	90-295V	24V	2.5A	60W	100-0.9	IP67/IP20
	HLG-60H-24	KKSC-05	90-305V	24V	2.5A	60W	100-0.9	IP67/IP20
	HLG-100H-24	KKSC-05	90-305V	24V	4A	100W	100-0.9	IP67/IP20
	HLG-150H-24	KKSC-05	90-305V	24V	6.3A	150W	100-0.9	IP67/IP20
	HLG-240H-24	KKSC-05	90-305V	24V	10.0A	240W	100-0.9	IP67/IP20

<sup>1</sup> The items shown above cover the most frequently used specification but does not exhaust the possible options

<sup>2</sup> PSU and/or driver can be chosen from the table, or KKDC may recommend the best option upon receipt of the controls requirement and installation environment

<sup>3</sup> Electrical shop drawing will include detailed information of PSU and relevant control drivers

<sup>4</sup> Cut sheets are available on the controls section of [www.kkdc.lighting](http://www.kkdc.lighting) or upon request